



PT. EMPU AGUNG SAKTI

**ENGINEERING & METALLURGICAL
ASSESSMENT SERVICES
FOR PLANT EQUIPMENT**

**BY
PT. EMPU AGUNG SAKTI**

Perkantoran Vila Delima No. 28 Lebak Bulus, Jakarta Selatan 12440

Telp : (021) 7502151; Mobile Phone/WA : 0811925351

E-mail : empuagungsakti@gmail.com; emas@empuagungsakti.com

www.empuagungsakti.com

SCOPE OF SERVICES

- Condition Assessment by In-Situ Metallography/ Replica Technique and Hardness Test.
- Remaining Life Assessment (RLA) by Non-Destructive and Destructive Tests
- Root Cause Failure Analysis and Prevention
- Corrosion Assessment by Deposit/Scale Analysis and/or Corrosion Rate Measurement
- QA/QC for Vendor's Product Fabrication
- In-House Training

PLANT EQUIPMENT COVERED:

A. Power Plant

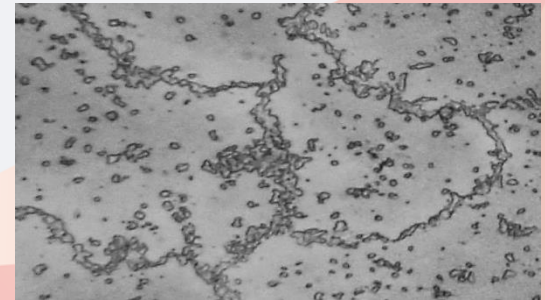
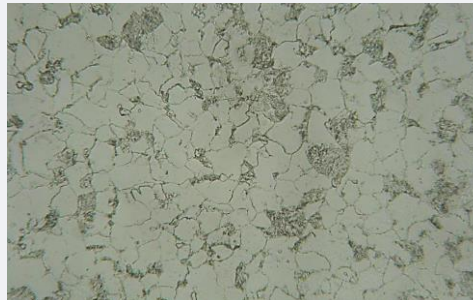
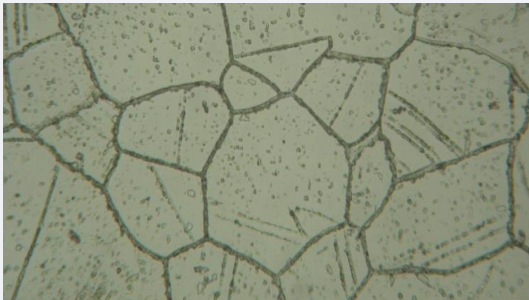
- Boiler and Combined Cycle Plant (HRSG)
- Gas and Steam Turbines
- High Energy Piping
- BOP (Balance of Plant)

B. Various Plants

(Oil & Gas, Chemical & Petrochemical, Pulp & Paper, Mining & Cement, Agro & Palm Oil Processing, Maritime, Transportation, Building & Construction, Metal Manufacturing & Fabrication, etc).

- Fired Heater (Furnace)
- Pressure Vessel/Reactor
- Reformer
- Heat Exchanger
- Boiler
- Process Piping & Pipeline
- Storage Tank
- Pump & Compressor
- Structural System and Machinery Component, Rotary Kiln and Drum, etc.

Condition Assessment By In-Situ Metallography/ Replica Technique and Hardness Test



Remaining Life Assessment (RLA) By Non-Destructive Test



**MAGNETIC PARTICLE TESTING
(MT)**



**WALL THICKNESS
MEASUREMENT**



ULTRASONIC TESTING (UT)



BOROSCOPE INSPECTION

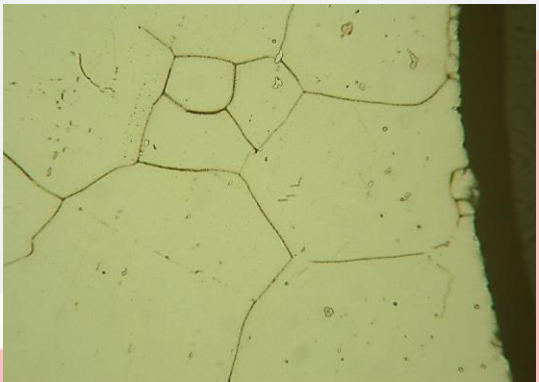
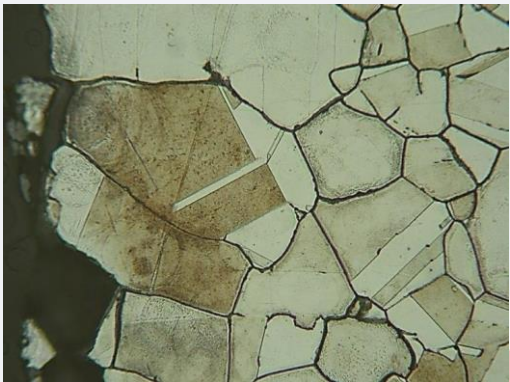
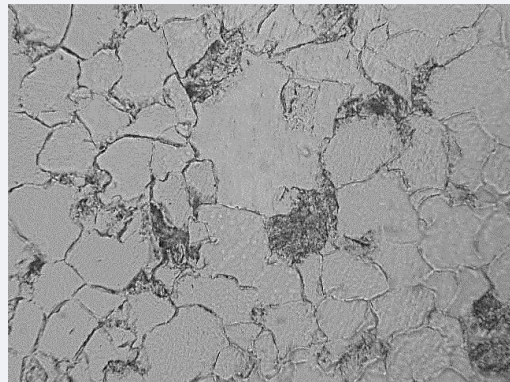


DYE-PENETRANT TEST (PT)

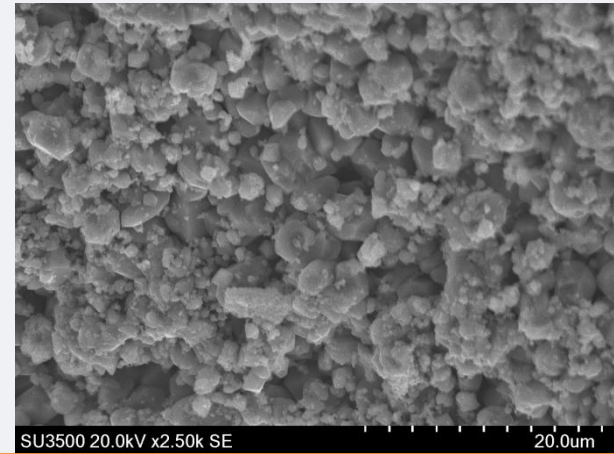
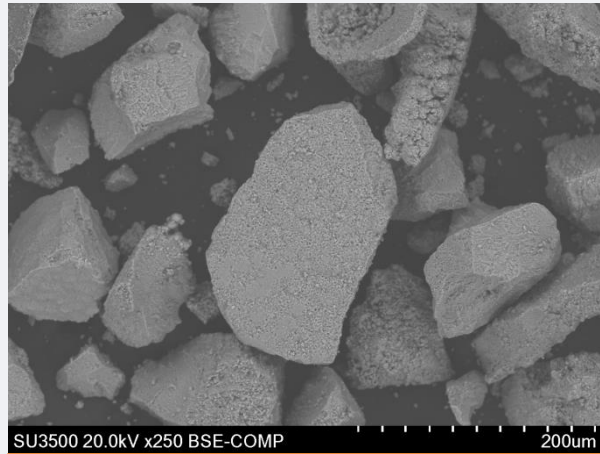


**WALL THICKNESS
MEASUREMENT**

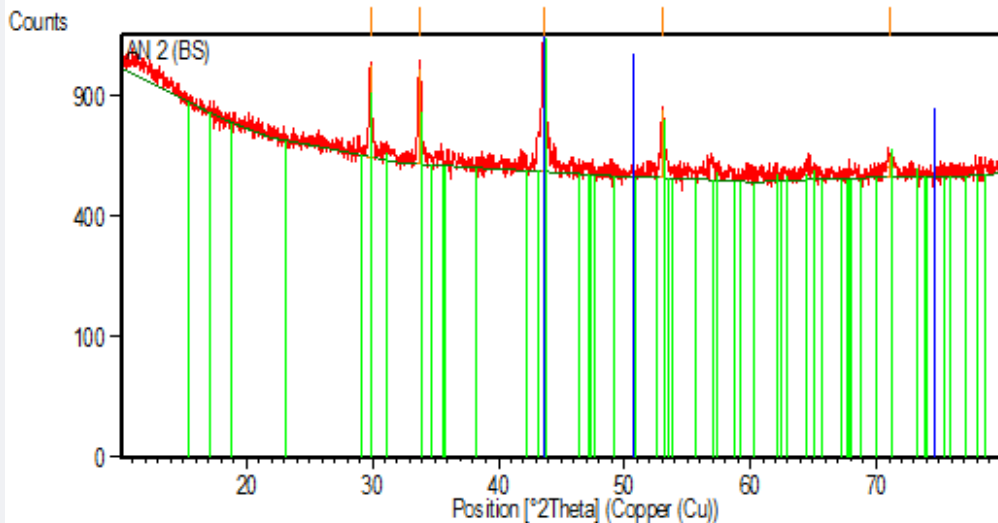
Remaining Life Assessment (RLA) By Destructive Test



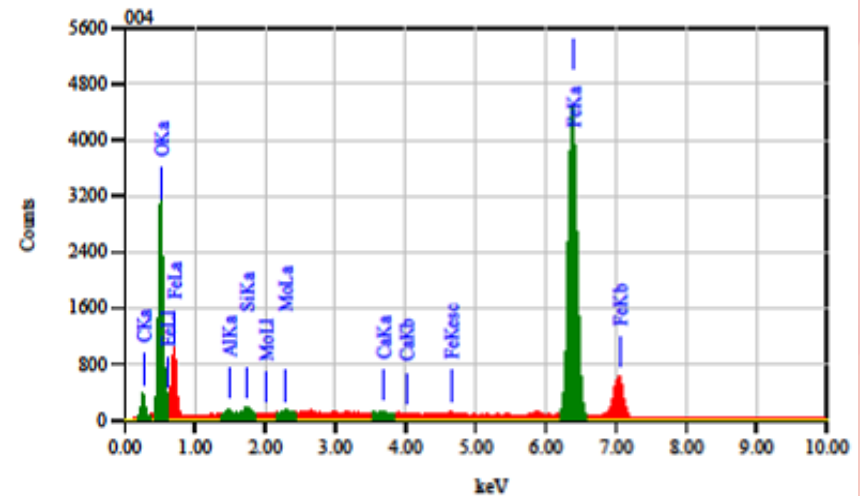
Corrosion Assessment By Deposit/Scale Analysis



Scanning Electron Microscopy (SEM)

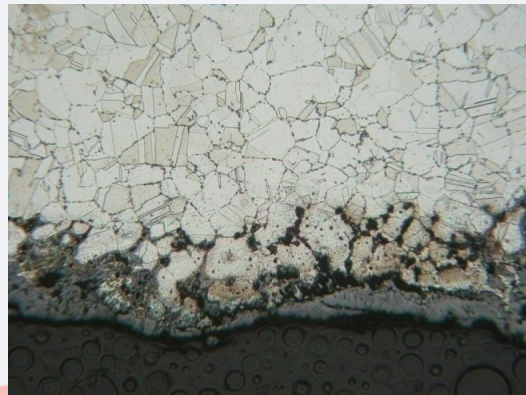
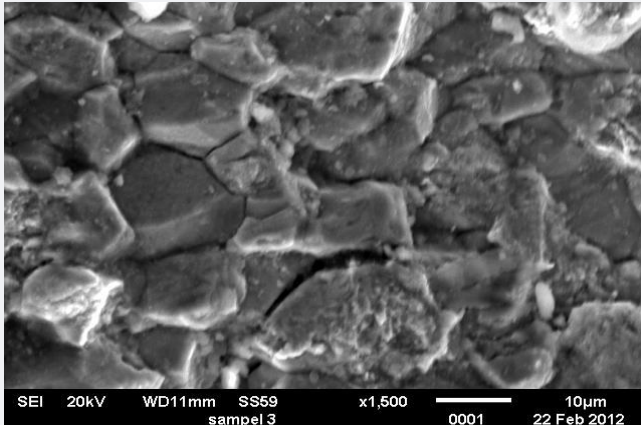
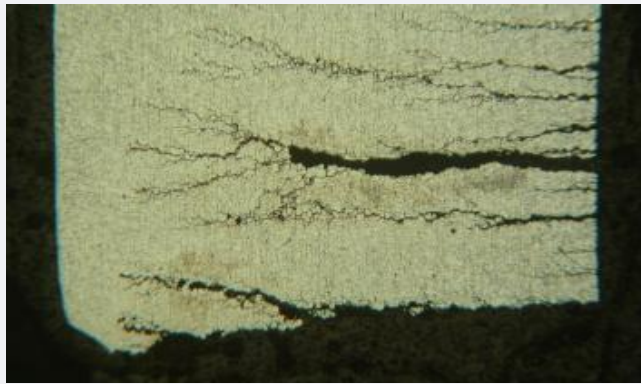


X-Ray Diffraction (XRD)

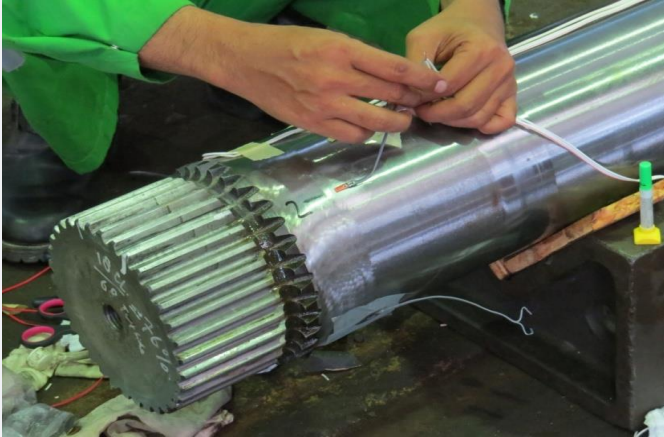


Energy Dispersive Spectroscopy (EDS)

Root Cause Failure Analysis and Prevention



QA/QC for Vendor's Product Fabrication



In-House Training



In-House Training



LIST OF CUSTOMERS

1	PT. Pembangkitan Jawa Bali, Unit Pembangkitan Gresik	11	PT. Pertamina (Persero) Refinery Unit V, Balikpapan
2	PT. Pertamina (Persero) Refinery Unit IV, Cilacap	12	PT. GE Indonesia
3	PT. Pembangkitan Jawa Bali, Unit Pembangkitan Muara Karang	13	PT. Sulzer Indonesia
4	PT. PLN (Persero) PUSHARLIS UP2WIII Bandung	14	PT. Pembangkitan Jawa Bali, Unit Pembangkitan Muara Tawar
5	PT. Paiton Operation and Maintenance Indonesia	15	PT. PJB Unit Bisnis Jasa O&M PLTMG Arun
6	PT. Pertamina (Persero) Refinery Unit VI, Balongan	16	PT. Pembangkitan Jawa Bali Unit Pelayanan Pemeliharaan Wilayah Barat
7	PT. Pertamina (Persero) Refinery Unit III, Plaju	17	PT. Pembangkitan Jawa Bali, Unit Pembangkitan Paiton
8	PT. Ecolab International Indonesia	18	PT. Cabot Indonesia
9	PT. GMF AeroAsia	19	PT. PJB Academy
10	PT. Pembangkitan Jawa Bali Services	20	PT. Goodrich Pindad Aeronautical System Indonesia

LIST OF CUSTOMERS

21	PT. Sucofindo (Persero)	30	PT. Prima Energi Consult
22	PT. BP Petrochemicals Indonesia	31	PT. Nusantara Turbin dan Propulsi (PT. NTP)
23	PT. Nuscaco Hasteloy Turbine Services	32	PT. Asta Keramasan Energi
24	PT. Nusakura Standarindo	33	PT. Multi Nitrotama Kimia (MNK)
25	PT. Bonne Indo Teknik	34	PT. Petrosea, Tbk
26	PT. Biro Klasifikasi Indonesia, Cabang Cirebon	35	PT. Indonesia Power UBP Tanjung Priok
27	PT. Gamma Mandiri Teknik	36	PT. Indonesia Power UBP Bali
28	PT. Regrahta	37	PT. Pertamina (Persero) Refinery Unit II, Dumai
29	PT. Sari Dumai Sejati	38	Kelapa Gading Mall, PT. Summarecon Agung, Tbk

LIST OF CUSTOMERS

39	PT. Tembaga Mulia Semanan, Tbk	48	PT. Merka Inspektindo Technical, Jakarta
40	PT. Pertamina Hulu Energi ONWJ Ltd	49	PT. Astra Honda Motor, Jakarta
41	PT. PJB Unit Pemeliharaan Wilayah Timur	50	PT. PLN (Persero) Jasa Teknik Kelistrikan, Jakarta
42	PT. Ecogreen Oleochemicals, Medan	51	PT. Titan Nusantara, Merak-Banten
43	ConocoPhillips, Indonesia Inc, Ltd	52	PT. Kaltim Pasifik Amoniak Bontang, Kalimantan Timur
44	PT. Radiant Utama Interinsco, Tbk	53	PT. Tambang Batu Bara Bukit Asam
45	PT. Supermal Karawaci Tangerang	54	PT. Chevron Indonesia
46	PT. Riau Pulp & Paper Industries	55	PT. Biro Klasifikasi Indonesia Cab. Banten
47	PT. Indonesia Power Unit Bisnis Jasa Pemeliharaan, Jakarta	56	PT. Chandra Asri Petrochemical, Cilegon